

FAI Sailplane Grand Prix®



Official FAI event under IGC rules

FAI 15m class or below











No index handicap, Limited loading 50kg/m²

Regatta start, SGP scoring & rules



SAILPLANE GRAND PRIX RULES & LOCAL RULES FOR BUNO 2017



-  · Schedule, Official files, official sites
-  · Buno Airfield & Facilities
-  · Wing loading, technical check
-  · Airspace
-  · Gridding 10 / 28
-  · Take off
-  · Focus on start procedure
-  · Focus on finish procedure
-  · Daily routine, communication, tracking, sponsorship
-  · Team & Contacts

SCHEDULE & SOCIAL



- 21 & 22th June : Free Flight, no official training, registration open (office)
- 23 & 24th June : official training, briefing 10:30, technical check open (book at office)
- 24th June : opening ceremony, Milly La Forêt Market place, French music festival, dress code mandatory (sport) with local officials !
- 25th June to 1st July : competition days
- 26th June : international evening, bring some local food and drinks to share with other pilots
- 1st of July 8pm : closing ceremony

ALL EVENINGS : MEET US AT THE RESTAURANT « L'ENVOL » TO SHARE GOOD TIME & DAILY WINNERS PODIUM at AROUND 19:00

OFFICIAL REFERENCES



- SGP RULES V8: <http://sgp.aero/france2017/event-information/documents.aspx?contestID=28457>
- LOCAL PROCEDURES: <http://sgp.aero/france2017/event-information/documents.aspx?contestID=28457>
- TURNPOINTS: <http://sgp.aero/france2017/event-information/documents.aspx?contestID=28457>
- AIRSPACE: <http://sgp.aero/france2017/event-information/documents.aspx?contestID=28457>

OFFICIAL WEBSITES



- Official website : <http://sgp.aero/france2017>
- Official Media Facebook : <https://www.facebook.com/AAVE-Association-A%C3%A9ronautique-du-Val-dEssonne-213947788620784/?fref=ts>
- Official Media FAI SGP : <https://www.facebook.com/faisgp>

BUNO AIRFIELD & FACILITIES



ICAO file of BUNO Airfield « LFFB »

- https://www.sia.aviation-civile.gouv.fr/dvd/eAIP_25_MAY_2017/Atlas-VAC/PDF_AIPparSSection/VAC/AD/AD-2.LFFB.pdf

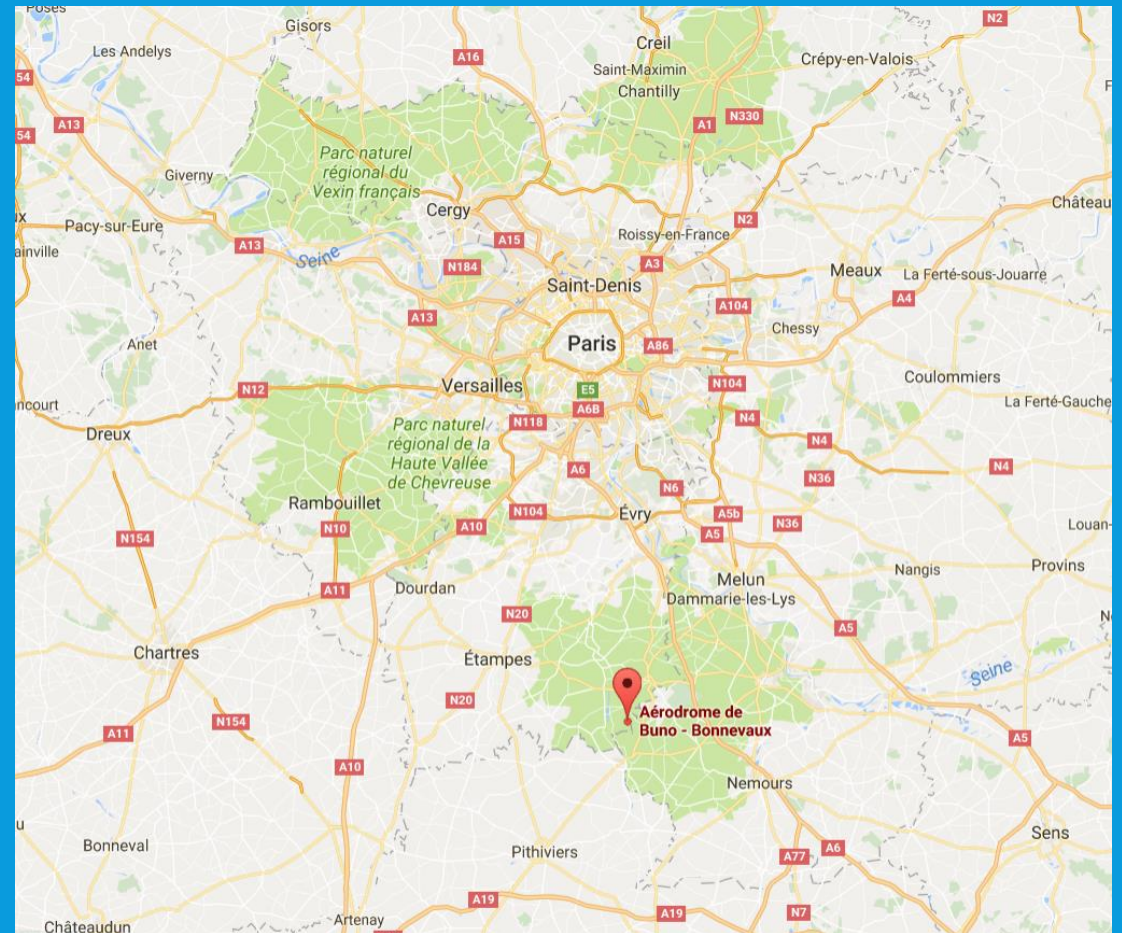
What to remember?

- Official elevation = 128 meters AMSL
- Official frequency for all operations = 123,15
- Main Runway in use = 10 / 28
- Emergency Runway = 01 / 19
- Landing pattern = opposite to camping in the forest (camoing is situated SW of the airfield)
- Club activity will remain during SGP, BE AWARE AND SAFE DURING LAUNCH AND FINISH

BUNO AIRFIELD & FACILITIES

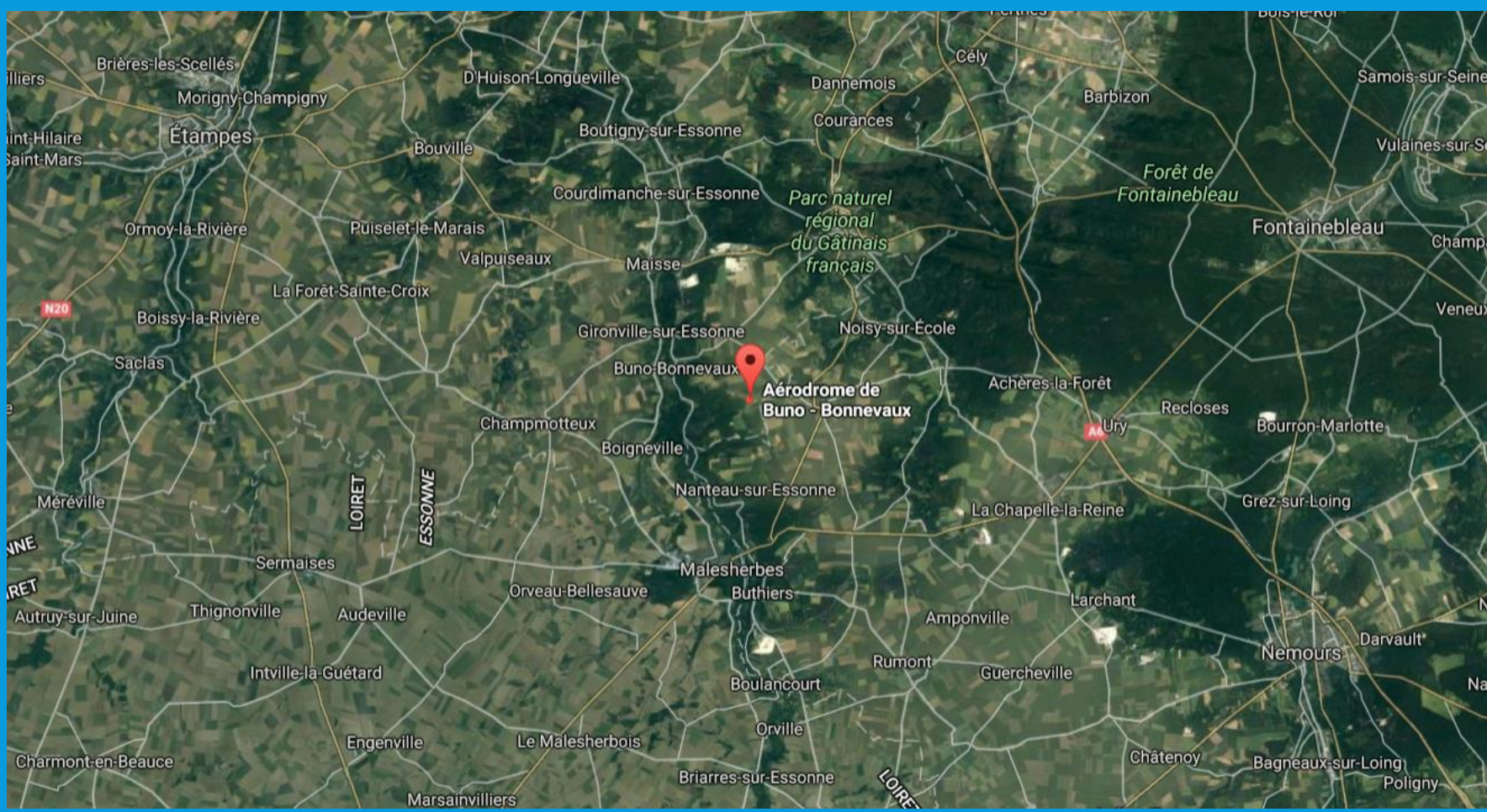


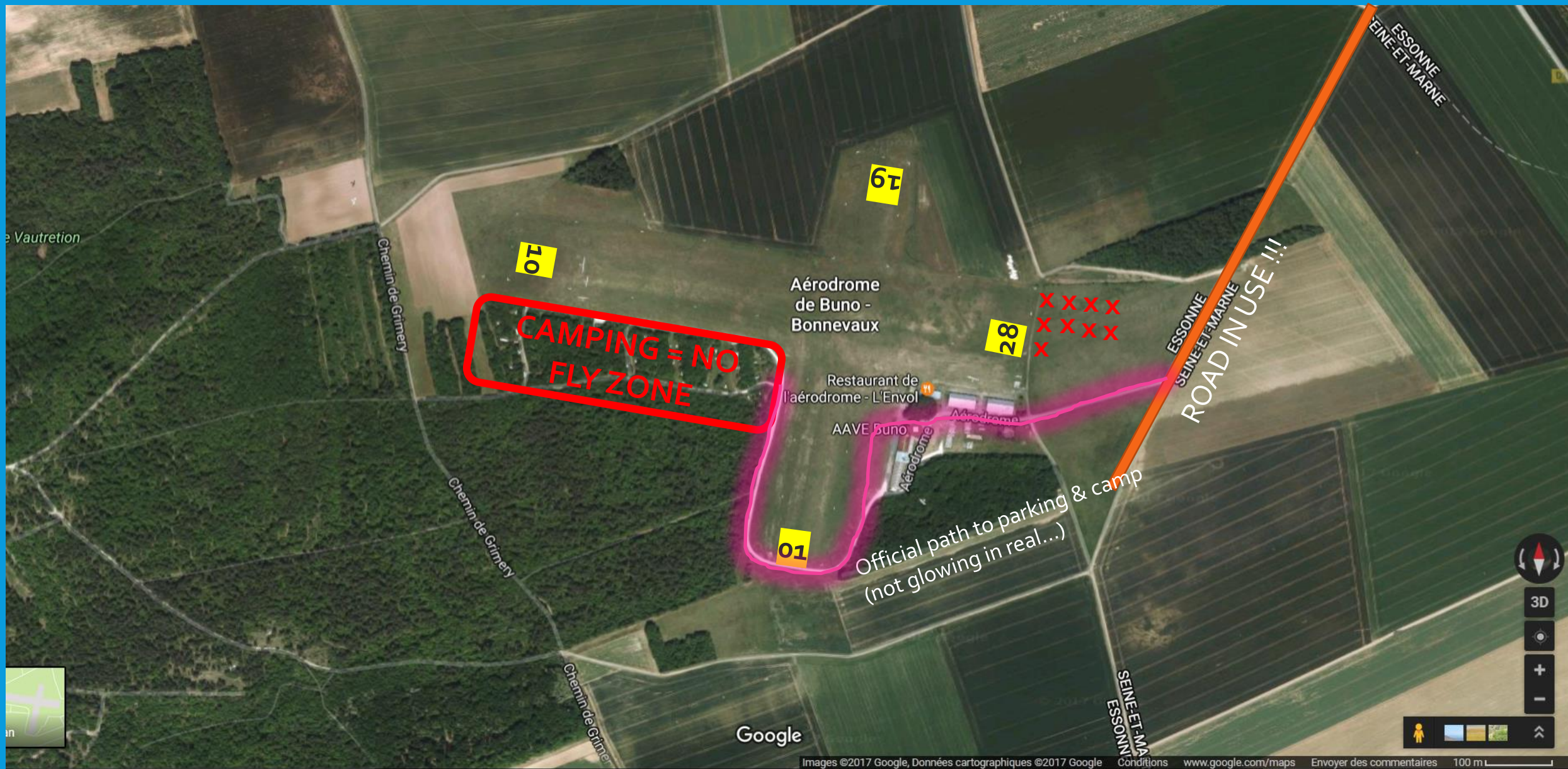
AVIATION DESIGN



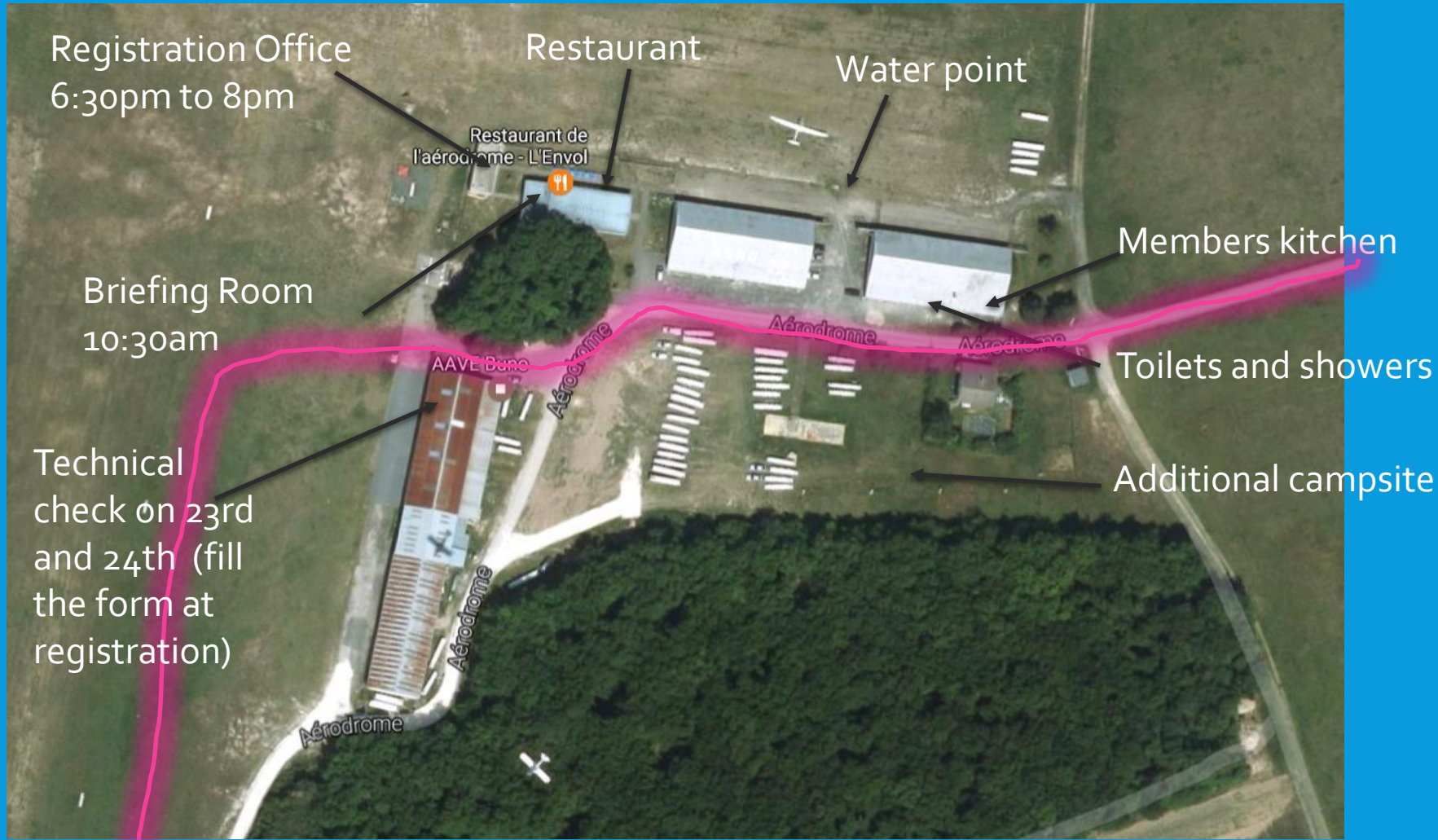
BUNO AIRFIELD & FACILITIES

FIELDS & FOREST

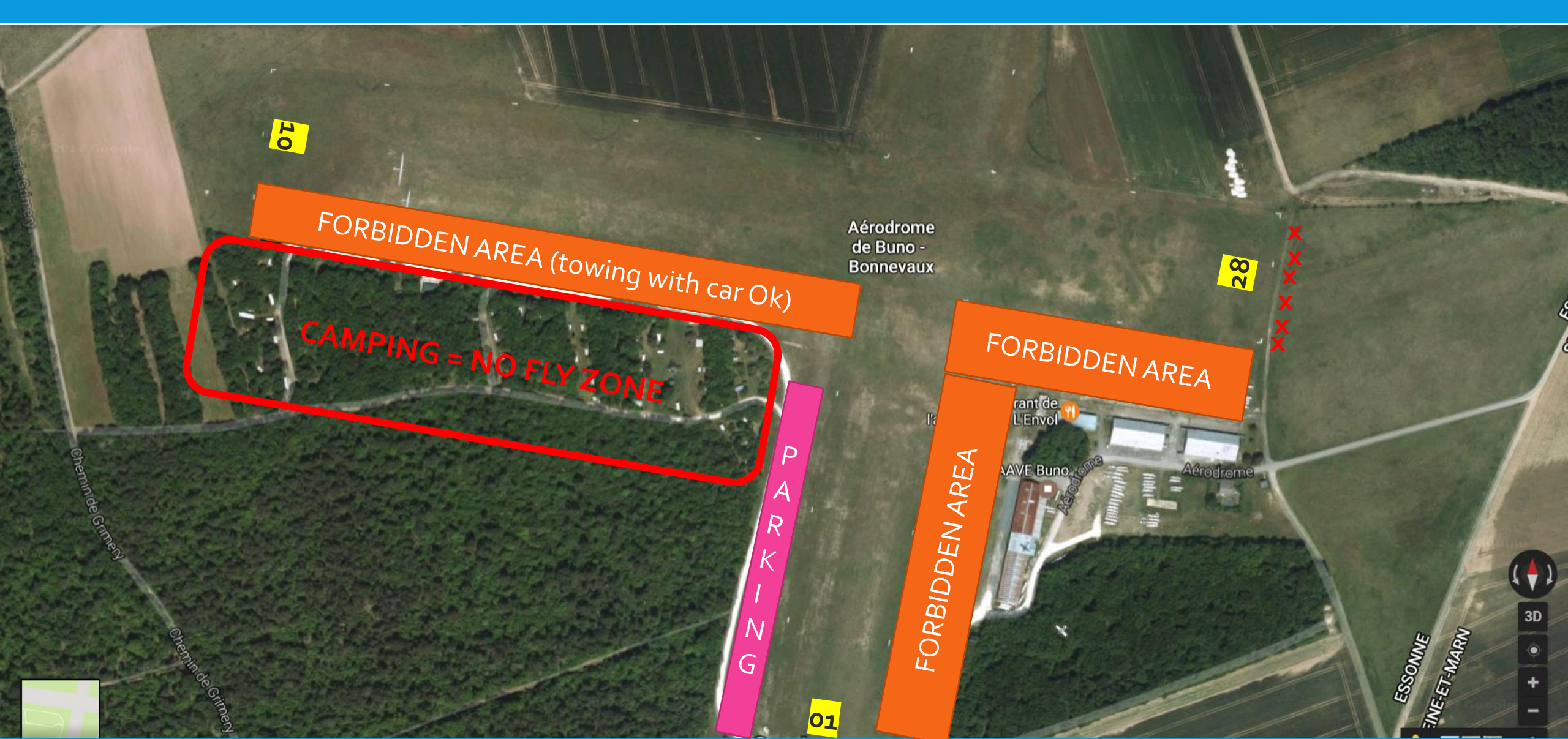




BUNO AIRFIELD & FACILITIES = STRIPS, CAMPSITE, PATH



BUNO AIRFIELD & FACILITIES



BUNO AIRFIELD = TRAILORS/SAILPLANES PARKING

WING LOADING = 50KG / M²

PLEASE BOOK YOUR TECHNICAL CHECK AT THE OFFICE AS SOON AS YOU ARRIVE



To provide a fair competition, maximize safety during take off, affordability of tows, we have decided to limit the load to any sailplane to 50kg/m² (local rules as permitted by SGP rules)



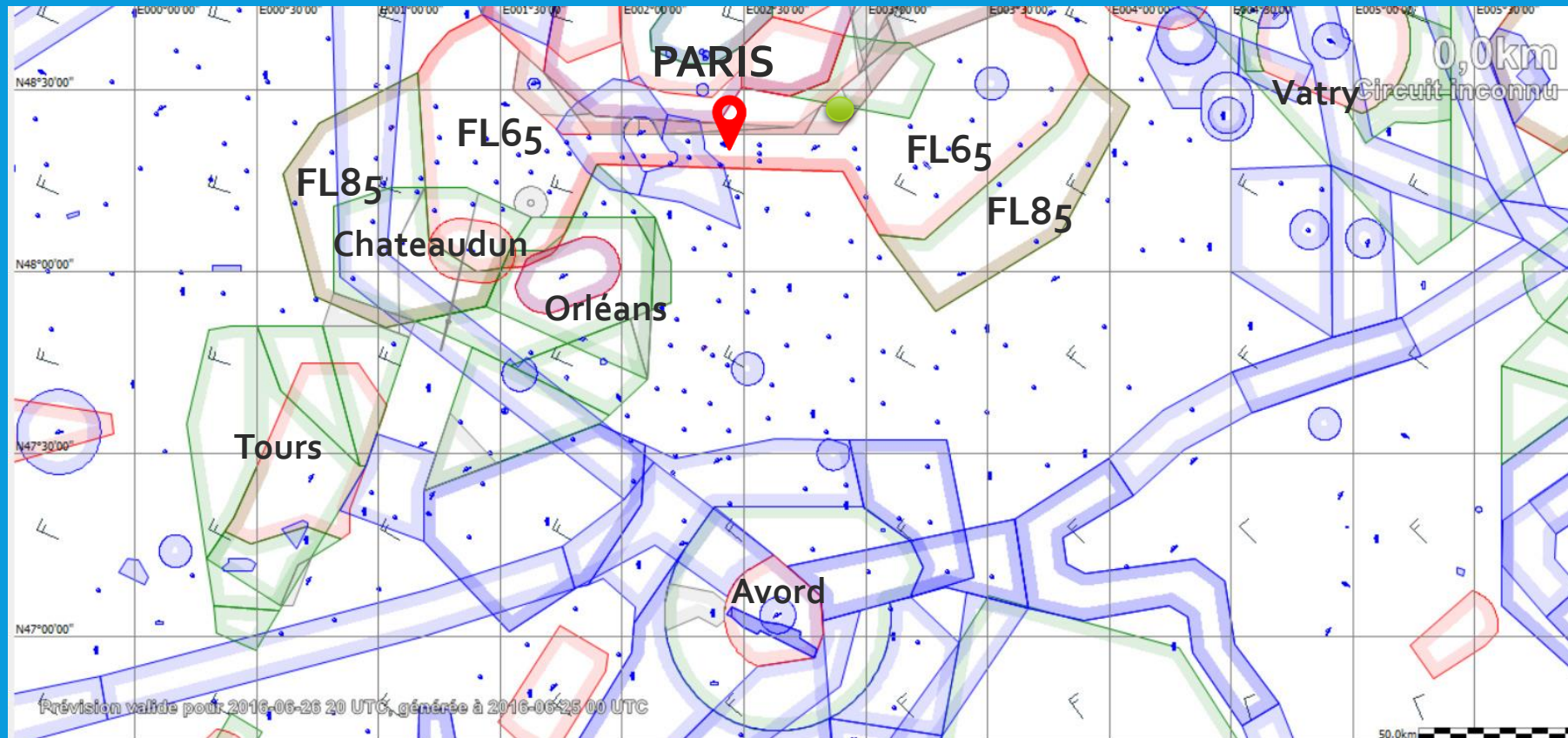
Official maximum sport weights of current competing sailplanes are as following:

- Ventus a, b, c = 475,5kg
- Discus2 a, b, c = 508kg
- Ventus2 a, b, c = 483,5kg
- Asw27 = 450kg
- Asw28 = 525kg
- Asg29 = 461kg

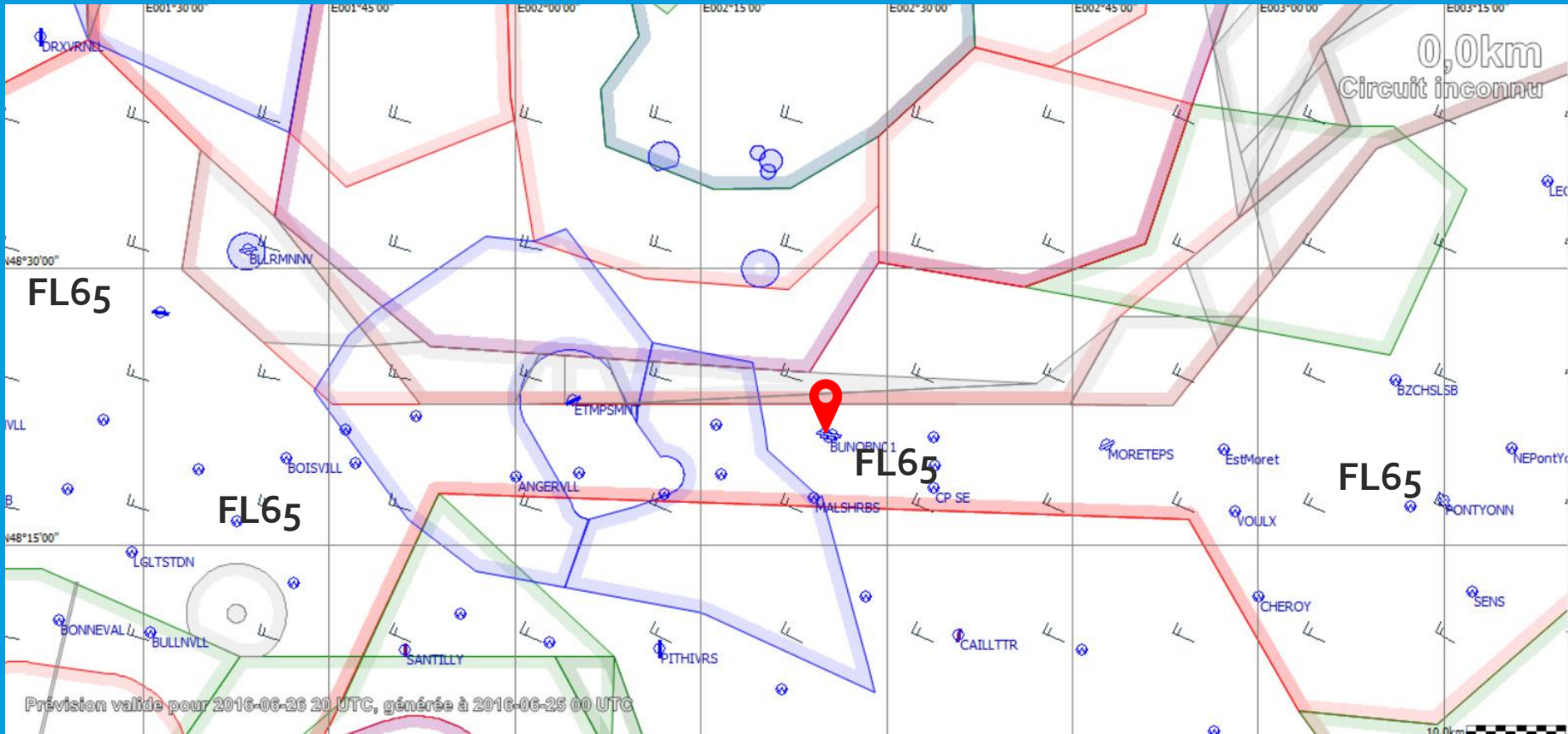


During initial technical check we will check your allowed sport mass (please come overloaded), then measure the mass on main wheel with towing bar and vehicle rigged as for gridding.
PLEASE BOOK TECHNICAL CHECK SLOT AT THE OFFICE AS SOON AS POSSIBLE (performed on 23rd and 24th of JUNE in tow planes hangar site)

AIRSPACE
WE WILL AVOID IT 
WE WILL EXPLAIN IT DAILY (MAX = FL115)



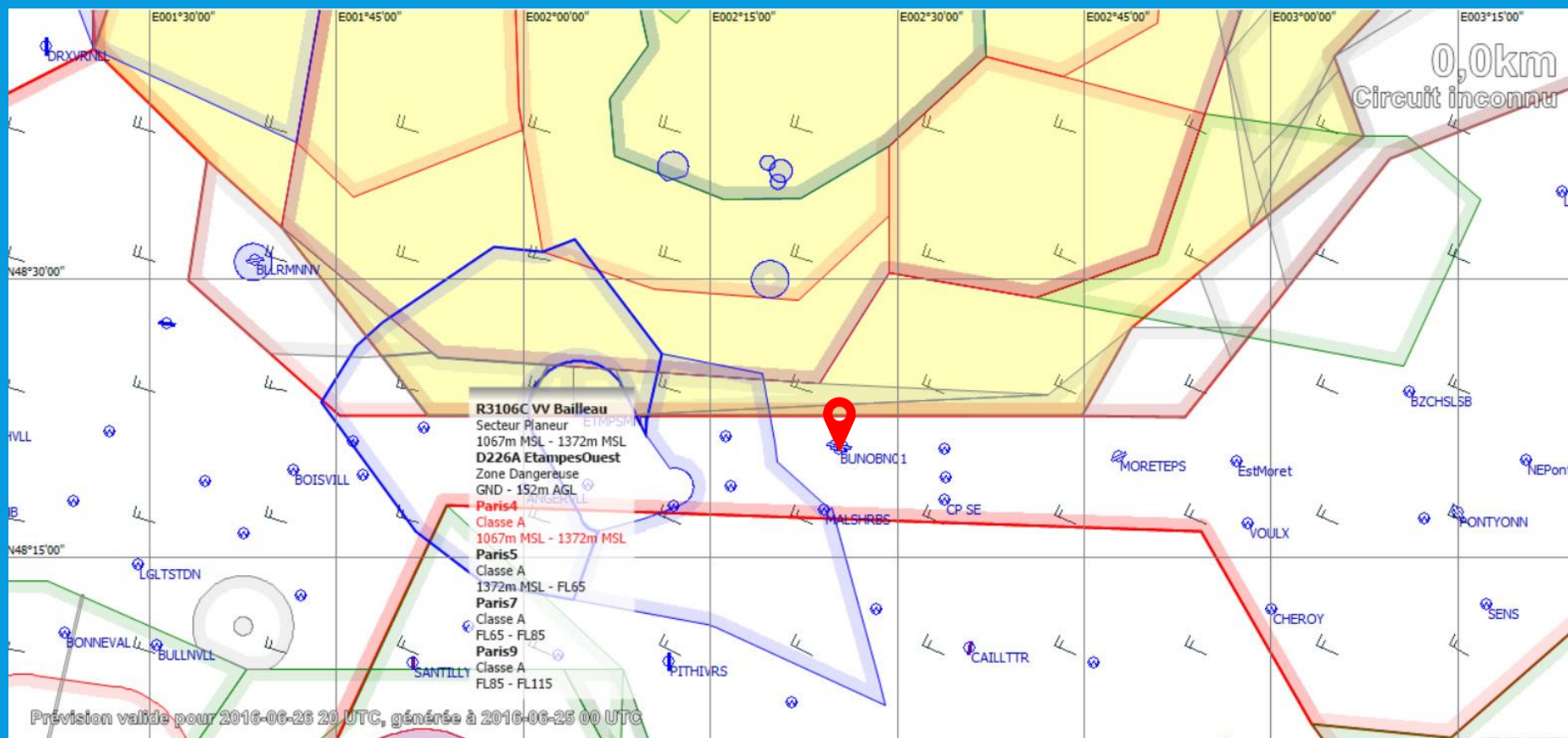
AIRSPACE
WE WILL AVOID IT 
WE WILL EXPLAIN IT DAILY (MAX = FL115)

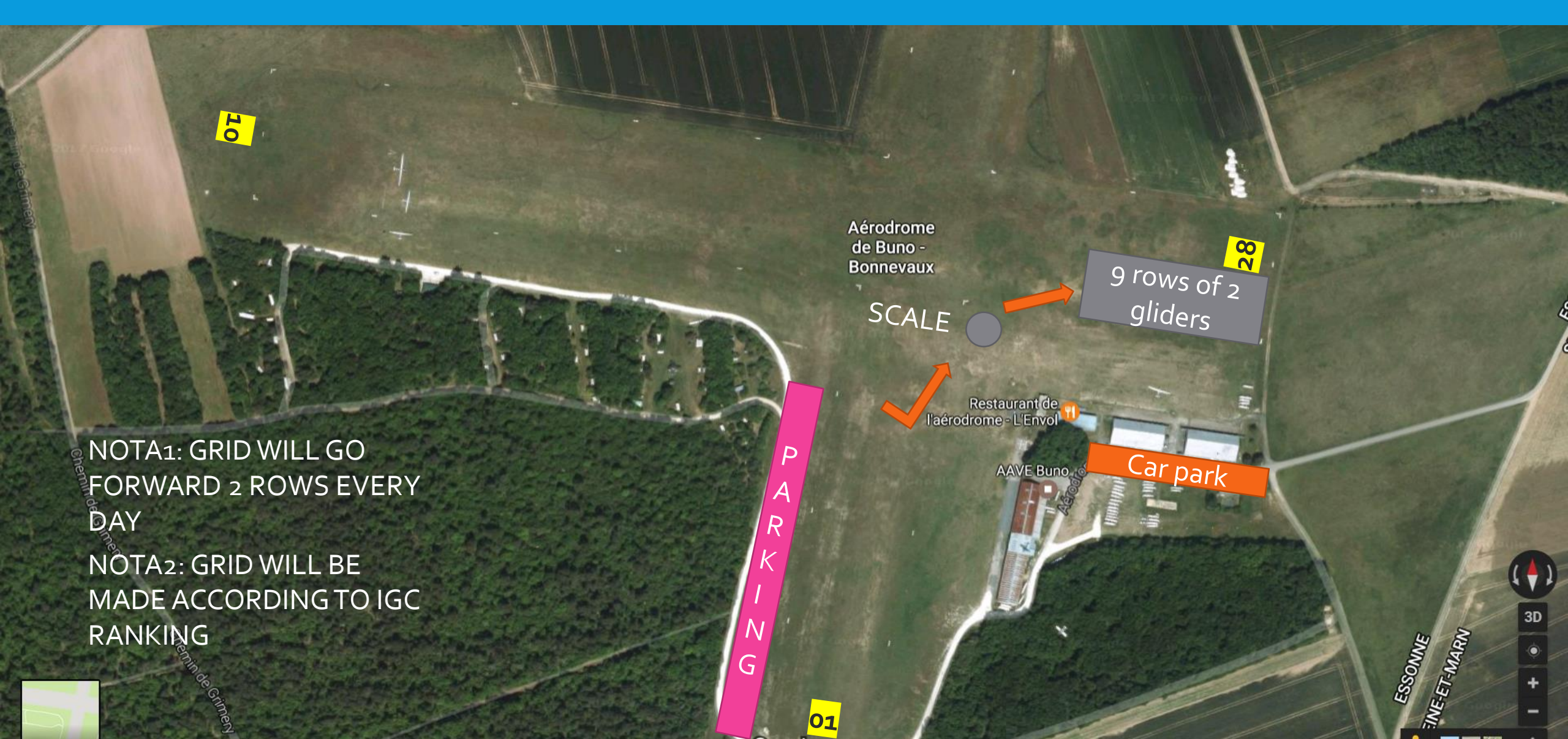


AIRSPACE WE WILL AVOID IT WE WILL EXPLAIN IT DAILY (MAX = FL115)



AVIATION DESIGN





NOTA1: GRID WILL GO FORWARD 2 ROWS EVERY DAY

NOTA2: GRID WILL BE MADE ACCORDING TO IGC RANKING

BUNO AIRFIELD & FACILITIES = GRIDDING 28



NOTA1: GRID WILL GO FORWARD 2 ROWS EVERY DAY

NOTA2: GRID WILL BE MADE ACCORDING TO IGC RANKING

BUNO AIRFIELD & FACILITIES = GRIDDING 10

TAKE OFF PROCEDURE AT AROUND 12:30



Blank: will be announced during briefing

START PROCEDURE



Aim of the process is to ensure fluid and safe start for everyone

- This include a standard process with rules... and penalties
- Start Speed limit = 170km/h (GPS) / Start max altitude (see task sheet)

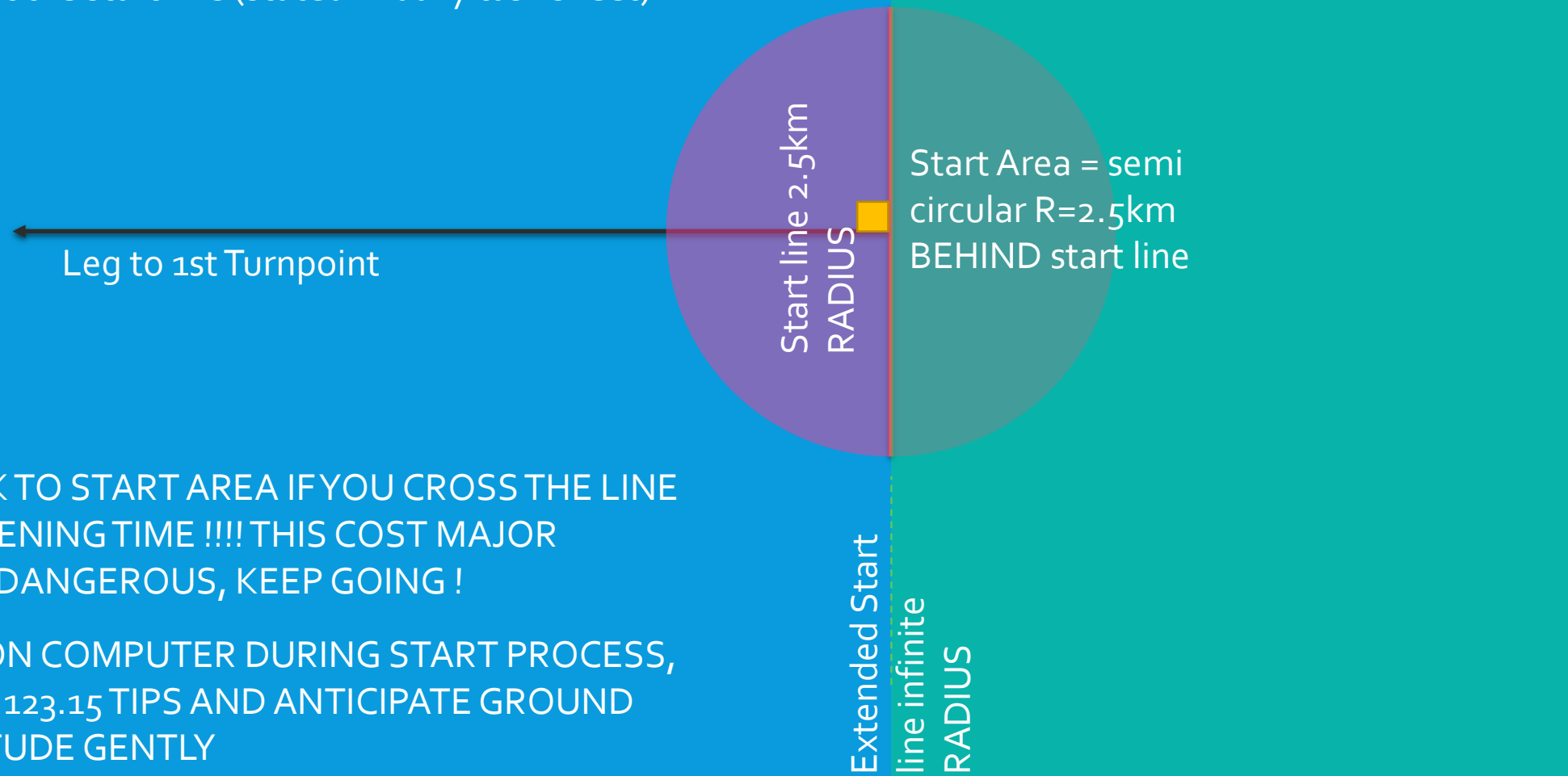


Process of start : please listen 123.15

- 20 minutes minimum after last tow, start gate can be open
- 5 minutes before opening of start gate : right circling (more than 90° prohibited in start area)
- 1 minute before opening of start gate : all pilots must be start line extended area
- After opening of start gate : all pilots must cross the gate below max altitude and below speed limit



- 1: 20 minutes minimum after last tow = possible start time
- 2: 5 minutes countdown = no right circling start area
- 3: 1 minute countdown = all pilots in start line extended area
- 4: start line open = less than 170km/h crossing the line and less than maximum altitude at the start line (stated in daily task sheet)



DO NOT GO BACK TO START AREA IF YOU CROSS THE LINE A BIT BEFORE OPENING TIME !!!! THIS COST MAJOR PENALTY AND IS DANGEROUS, KEEP GOING !



DO NOT FOCUS ON COMPUTER DURING START PROCESS, PLEASE FOLLOW 123.15 TIPS AND ANTICIPATE GROUND SPEED AND ALTITUDE GENTLY

FINISH PROCEDURE



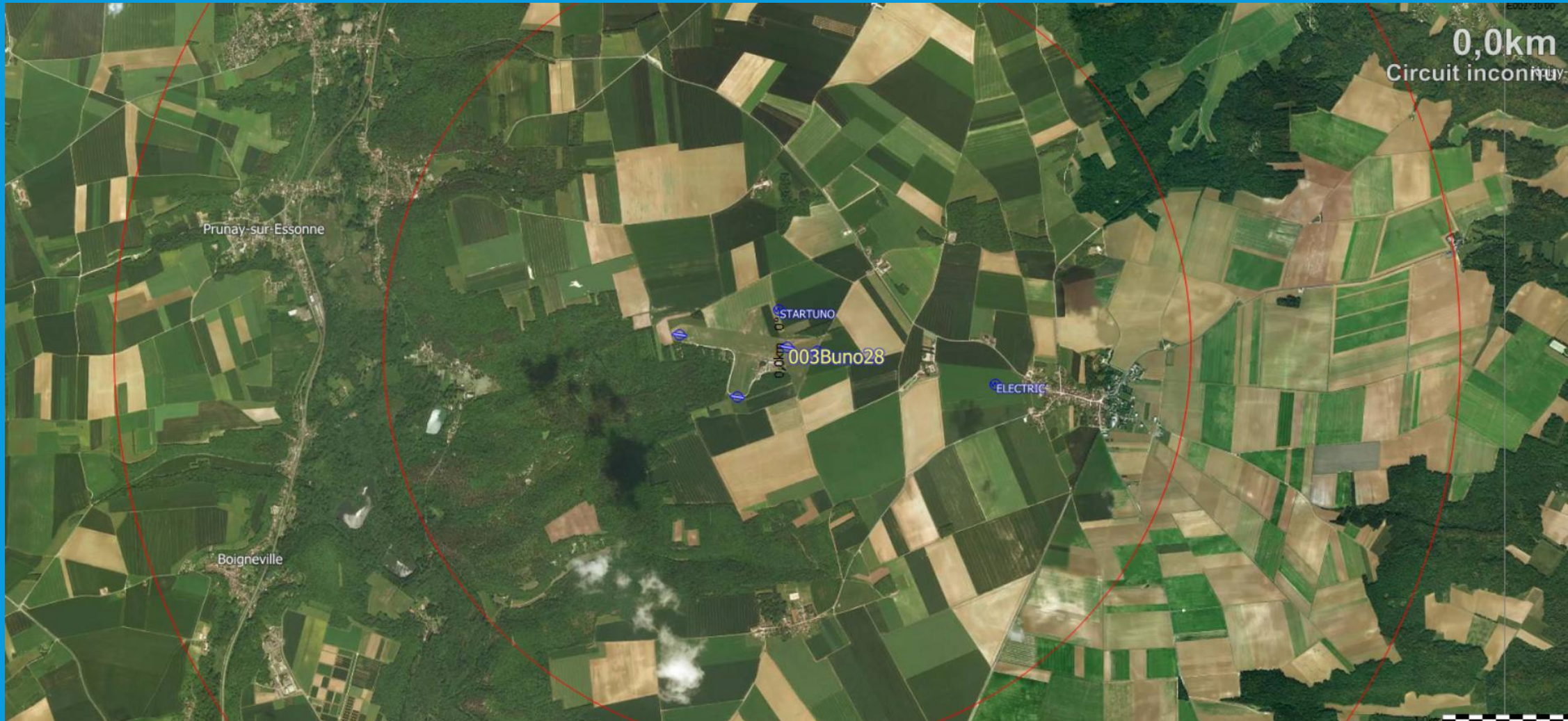
- Tight your seat belt / up volume of radio / stay focus and calm
- Use airbrakes gently in high speed, NO PULL UP !
- Report TP will be used for alignment to runway in use



- Please call 123.15
 - « callsign 10 ks »
 - Competition direction will answer : « callsign + wind (if needed or any usefull information) »
 - « callsign 5 ks + intention (speed finish / direct landing)
 - Competition direction will answer : « callsign + tips »

BUNO FINISHES

2 SCENARI = WINDY / NOT WINDY





**STRONG WIND = MINIMUM 3KM RING FINISH WILL BE USED
MINIMUM ALTITUDE = TO BE NOTIFIED (TASK SHEET)**



STANDARD WEATHER = DIRECT FINISH 28

Minimum altitude is 138m (10m AGL LFFB) from last turnpoint to TP «ROAD»

- STANDARD = DIRECT LANDING 28
- LANDING 28 SOUTH SIDE (EXCEPT WHEN NEEDED OR if CONTROL TELLS YOU)
- IN CASE OF MASS LANDING (GAGGLE) = LONG LANDING ON 28
- VACATE ONLY WITH MINIMAL ENERGY
- EMERGENCY STRIP 01 = CALL 123.15
- ALL DANGEROUS MANOEUVERS WILL BE STRONGLY PENALIZED



SPEED FINISH 138m MINI ON FINISH LINE

FINISH LINE LENGTH 0.5km

Aérodrome de Buno -

28

DO NOT CROSS

restaurant de l'aérodrome - L'Envol

AAVE Buno

Aérodrome

Aérodrome



ROAD IN USE

ESSONNE

SEINE-ET-MARN

01



FINISH PROCEDURE STANDARD ON 28 = DIRECT SOUTH

DAILY ROUTINE & COMMUNICATION



- Grid is open at 9:00am and close at 10:30 (Official grid in use will be displayed on Facebook / Office building / Text on cellphones)



- Daily briefing is at 10:30



- INTERVIEW ON THE GRID (GRID WALK) from 12:00 to 12:15



- First launch expected 12:30



- Start line opens around 13:30



- Finishes around 17:00



- INTERVIEW OF PILOTS AFTER LANDING



- Daily podium 19:00



- **WE KINDLY ASK YOU TO WEAR NICE AND SPORTY CLOTHES FOR A BETTER PROMOTION OF OUR SPORT (PLEASE NO BAD PILOT HAT !!!)**

TRACKING & COMMUNICATION



- SPONSORSHIP IS MANDATORY (ONE STICKER PER SAILPLANE)
- TRACKING IS MANDATORY



- **PLEASE PROVIDE AS SOON AS POSSIBLE** (scoringbuno@free.fr)

- FLARM RADIO ID (send us igc file of your flarm)
- XCSOAR ID if used
- Beacon ID if used (like SPOT tracking) or any other tracking system



- **PLEASE USE FLARM** with good Rx (antenna is critical for range)

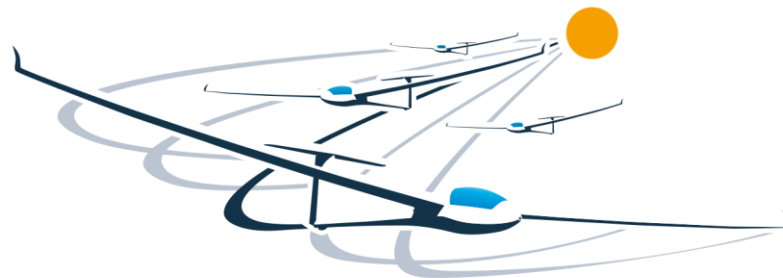
- DO NOT DISCONNECT FLARM
- ENSURE TRACKING IS PERMITTED
- ENSURE NO STEALTH MODE IS USED

TEAM & CONTACTS



- Buno President : Jean-Noël Marquet
- Competition Director, scoring : Benjamin Néglais
- Airfield Manager : Benoît Pontanus
- Media Manager : Team Mathilde Metz & François Besse
- Video Team : Team Valentin Bruhiere
- Tracking : Team Angel Cassado
- Competition Scoring : scoringbuno@free.fr
- Airfield website : <http://aave-buno.net/>

SEE YOU DURING OFFICIAL TRAINING PERIOD, BRIEFING 10:30
ANY QUESTION : EMAIL SCORING



FAI Sailplane Grand Prix®



Official FAI event under IGC rules

FAI 15m class or below

No index handicap, Limited loading 50kg/m²

Regatta start, SGP scoring & rules

